

DRINKWARES



**Promoting your Brand while
enjoying your drinks.**



**TM-011-BK****Bamboo Flask with Tea Infuser and Black Lid with Handle.**

Double wall stainless steel flask with black lid with handle and a tea infuser.

Product Size : 65 x 235 mm | Capacity: 500 ml.

Printing options : Screen Printing, UV Printing, Laser Engraving

**TM-012****Bamboo Flask**

Thermo in combination of bamboo and stainless steel materials. BPA free with double wall for a better and longer preservation of liquid's temperature. Screw on closing mechanism, including a lid/cup in stainless steel.

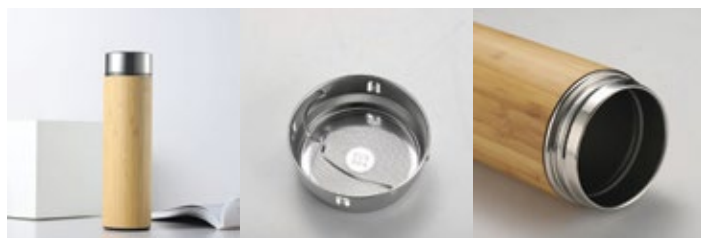
Product Size : 65 x 255 mm | Capacity: 430 ml.

Printing options : Screen Printing, Laser Engraving



BAMBOO FLASK

with Temperature Indicator

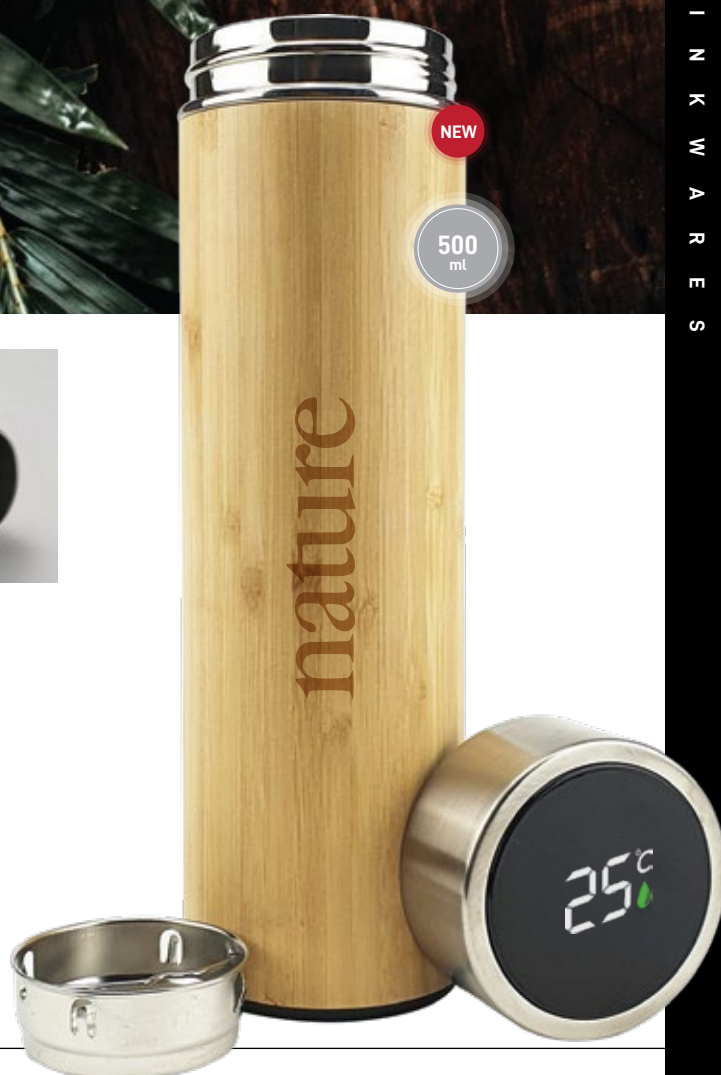


TM-018

Bamboo Flask with Temperature Display

High quality and high capacity Thermos flask with filter, with body made from bamboo material and double wall stainless steel interior. Product Size : 70 x 250 mm | Capacity : 500ml

Printing options : Screen Printing, Laser Engraving



TM-011

Bamboo Flask

Double wall stainless steel insulating vacuum flask with bamboo cover and additional tea infuser. Product Size : 70 x 205 mm | Capacity: 450 mL

Printing options : Screen Printing, Laser Engraving



GLASS & BAMBOO

Flask with Tea Infuser



TM-014

Glass and Bamboo Flask

Double wall in high borosilicate glass bottle and bamboo lid with tea infuser.
Product Size : 70 x 230 mm | Capacity: 500 mL.

Printing options : Screen Printing, Laser Engraving

TM-032-BM

Glass Bottle with Sleeve

Bottle in combination of bamboo and glass materials.
Screw on bamboo lid and an elegant, eco-inspired sleeve.
Carrying handle in nature color and presented in an box.

Product Size : 63 x 225 mm | Capacity: 500 mL.

Printing options : Screen Printing, Heat Transfer

500
mL



**Eco-inspired Sleeve.
For your Multi-color
brand printing.**

Monotree





NEW

530
ml**TM-017-BK****Black Stainless Steel Flask with Bamboo**

High quality and high capacity Thermos flask, with body made from bamboo and stainless steel. Double-wall interior. Black lid with handle
Product Size : 75 x 285 mm | Capacity : 530 ml

Printing options : Screen Printing, UV Printing, Laser Engraving

**TM-013****Stainless Steel Flask with Bamboo Lid**

Double wall stainless steel insulating vacuum flask with lid in bamboo and carry handle.
Product Size : 70 x 255 mm | Capacity: 600 mL

Printing options : Screen Printing, Laser Engraving, Sublimation



W

SL

BK





RPET

recycled polyethylene terephthalate

It is a food-safe raw material made from empty PET packaging that has been collected and prepared for recycling.

TM-033

RPET Bottle with String Handle

Sports bottle. Made from Recycled materials

Material : Recycled PET

Product Size : 65 x 210 mm | Capacity : 550 ml

Printing options : Screen Printing, UV Printing



TM-008

Promotional Sports Bottle with Sleeve

Sports bottle. Glass and stainless steel with softshell coloured sleeve.

Material : Glass & Steel, Polyester

Product Size : 65 x 225 mm | Capacity : 500 ml

Printing options : Screen Printing



DoubleWall



① Matte Texture
Double Wall Body

500
ml



TM-015-BK

Stainless Steel Bottle

A Matte black texture double wall stainless steel bottle,
Silver twist top lid holds a silicone ring to prevent leakage.
Has a 304 stainless steel inside material.

Product Size : 80 x 260 mm | Capacity : 500 ml

Printing options : Screen Printing, Laser Engraving



BK



W

NEW

800
ml



Great bottle for
Travels

TM-019

Stainless Steel Flask

Double wall stainless steel insulating vacuum
flask with lid and a carry handle.

Product Size : 90 x 230 mm | Capacity : 800 ml

Printing options : Screen Printing, Laser Markings
Sublimation.





BK R BL



W SL



CL

TM-009

Stainless Steel Travel Bottle

Matte texture bottle.

Material : Stainless Steel

Size : 70 x 270 mm | Capacity : 500 ml

Printing options : Screen Printing

144

Stainless Steel Travel Bottle

Glossy texture bottle.

Material : Stainless Steel

Size : 70 x 270 mm | Capacity : 500 ml

Printing options : Sublimation

TM-004

Transparent Travel Bottle

Transparent Body with Stainless Cap & Base

Material : SA Plastic & Stainless Steel

Size : 70 x 270 mm | Capacity : 500 ml

Printing options : Screen Printing, UV Printing





140

Promotional Sports Bottle

Matte texture aluminum body with carabiner clip.

Material : Aluminum

Product Size : 73 x 260 mm | Capacity : 750 ml

Printing options : Screen Printing



Innovative Lid with integrated straw.



Silicone Band to match the cap.

TM-007

Promotional Travel Bottle with Straw

Clear Body with 4 Strips of Silicone Band

Material : Tritan Plastic

Product Size : 75 x 230 mm | Capacity : 750 ml

Printing options : Screen Printing, UV Printing





W

BK

R

BL

TM-002

Promotional Bottle with Fruit Infuser

Simply pop in your favourite fruits & you're good to go -so let this be your daily water bottle! This design comes with a foldable handle and nozzle for easy drinking!

Product Size : 68 x 245 mm | Capacity : 700 ml

Printing options : Screen Printing



W

BK

GR

BL

TM-003

A5 Memo Water Bottle

A5 Memo water bottles are designed to fit stylishly into handbags, backpacks, laptop bags and more. Slim design to fit easily. Material : AS Plastic. Product Size : 13 x 21 x 3.2 cm | Capacity : 420 ml

Printing options : Screen Printing, UV Printing



W

SL



139

Stainless Steel Bottle

Water bottle with integrated straw lid and Second cap with carabiner clip.

Product Size : 75 x 185 mm

Printing options : Sublimation



Tumblers

for Corporate
or Personal use.

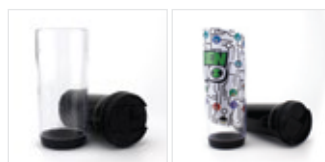


W BK R BL

TM-005

Double wall Travel Tumbler with Clear lid

Material : Stainless Steel & AS Plastic
Product Size : 75 x 190 mm | Capacity : 500 ml
Printing options : Screen Printing, UV Printing



TM-001

Travel Tumbler

Material : AS Plastic.
Product Size : 70 x 180 mm
Printing options : Digital Printing



TM-006

Stainless Steel Travel Tumbler

Material : AS Plastic & Stainless Steel.
Product Size : 85 x 195 mm
Printing options : Digital Printing





TM-030

Travel Cup with Bamboo Lid

Double-walled borosilicate glass travel cup with bamboo lid. Capacity up to 320 ml, Ideal for cold or hot liquids, Lid with silicone insulation that facilitates the transport of the glass avoiding splashes. Microwave & dishwasher safe, when lid is removed.

Printing options : Screen Printing, Laser Engraving (Lid Area)



TM-031

Travel Cup with Bamboo Lid & Spoon

Cup is made from borosilicate glass, offering exceptional resistance and durability. Also includes a lid and spoon with each mug, made from polished bamboo and presented in a cardboard box. Capacity up to 400ml.

Printing options : Screen Printing, Laser Engraving (Lid Area)



Made from Wheat Straw + Cork + Bamboo material

TM-023-BM

Travel Cup with Bamboo Lid & Cork Grip

Single wall tumbler in 65% PLA corn and 35% wheat straw with bamboo lid and cork grip. It is made from fermented plant starch which is free of toxics. Product Size : 85 x 130 mm. Capacity : 420ml

Printing options : Screen Printing, Laser Engraving (Lid Area)



**TM-016****Black Stainless Steel Travel Tumbler with Bamboo**

Stainless Steel double-wall body, and a touch of bamboo material.
Spill proof Transparent PVC lid
Size : 85 x 185 mm | Capacity : 450 ml

Printing options : Screen Printing, UV Printing, Laser Engraving

**TM-010****Black Stainless Steel Travel Tumbler with Cork base**

Stainless Steel double wall body, and a touch of Cork material as base.
Spill proof Transparent PVC lid
Size : 80 x 175 cm | Capacity : 450 ml

Printing options : Screen Printing

**151-BK****Black Ceramic Mug with Cork base**

Travel Mug made with ceramic material, and a touch of Cork material as base. Spill proof Clear lid
Product Size : 88 x 110 cm | Capacity : 385 ml

Printing options : Screen Printing



385 ml





TM-020

Wheat Straw Cup with Silicone lid and band

Material : Wheat Straw, PP & Silicone
Product Size : 95 x 115 mm | Capacity : 350 ml

Printing options : Screen Printing



TM-021

Bamboo with Silicone lid and band

Material : Bamboo Fiber, PP & Silicone
Product Size : 95 x 115 mm | Capacity : 350 ml

Printing options : Screen Printing



146N

Ceramic Mug with Silicone Cap & Base

Ceramic mug with a heart shaped handle & matching color of silicone cap to avoid leaks & non-slip silicone base. Product Size : 85 x 125 mm

Printing options : Sublimation



GLOSSY



147-D

11 oz White Sublimation Ceramic Mug - Glossy Finish

White ceramic mug with glossy finish for sublimation printing.
Can also be packed in a presentation cardboard box.

Product Size : 80 x 95 mm | Capacity : 325 ml

Printing options : Sublimation

MATTE

167-BK-M

11 oz Color Changing Mug - Matte Black

Color changing mugs look simple enough at first glance.
But pouring any hot drink into the heat sensitive glossy
black ceramic mug reveals a special surprise.

Product Size : 80 x 105 mm | Capacity : 325 ml

Printing options : Sublimation





168

Two-Tone Ceramic Mug

Ceramic mug with Colored Inside and Handle.
Product Size : 85 x 125 mm. Capacity : 325 ml - 11 oz

Printing options : Sublimation



170

Two-Tone Ceramic Mug with Spoon

Ceramic mug with Colored Inside, Handle and Spoon.
Product Size : 80 x 102 mm, | Capacity : 325 ml - 11 oz

Printing options : Sublimation



Arabic Cup Set

TM-050-BK

Stainless Steel Arabic Coffee Cup

Lightweight and easy to carry.
Product Size : 65 x 45 mm.

Printing options : Laser Markings



440
ml

148

White Glossy Finish Sublimation Ceramic Mug

Product Size : 85 x 115 mm, Capacity : 440 ml - 15 oz

Printing options : Sublimation

295
ml

155

White Glossy Finish Sublimation Ceramic Mug

Product Size : 70 x 105 mm, Capacity : 295 ml - 10 oz

Printing options : Sublimation

295
ml

169

Curve Edges White Glossy Sublimation Ceramic Mug

Product Size : 75 x 105 mm, Capacity : 295 ml - 10 oz

Printing options : Sublimation

325
ml

191

Ceramic Mug with a Heart-shaped Handle.

White mug with glossy finish, Delivered in set of two mugs.

Perfect gift for couples in love.

Capacity : 325 ml each / 11 oz each

Printing options : Sublimation

120
ml

180

Ceramic Saucer Tea Cup

Set of white glossy finish ceramic cup, saucer and a spoon.

Product Size : 50 x 80 mm | Capacity : 120 ml - 4 oz

1 pack : 36 pcs | GW : 13 kg

Printing options : Sublimation

180
ml

154

Ceramic Tea Cup

White glossy finish ceramic tea cup

Product Size : 50 x 80 mm | Capacity : 180 ml - 6 oz

1 pack : 48 pcs | GW : 12 kg

Printing options : Sublimation



**175-S****Glossy Finish Silver
Sublimation Ceramic Mug**

Product Size : 80 x 98 mm

Capacity : 325 ml - 11oz

Printing options : Sublimation**175-G****Glossy Finish Gold
Sublimation Ceramic Mug**

Product Size : 80 x 98 mm

Capacity : 325 ml - 11oz

Printing options : Sublimation**172****Glossy Finish Black
Sublimation Ceramic Mug
with Printable Area**

Product Size : 80 x 98 mm

Capacity : 325 ml - 11oz

Printing options : Sublimation**182****Conical Short Glass with Gold rims**

Product Size : 45 x 60 mm. Capacity : 44 ml - 1.5 oz

Printing options : Sublimation**149****White Glossy Ceramic Beer Mug**

Product Size : 78 x 160 mm. Capacity : 590 ml - 20oz

Printing options : Sublimation



COA-01

Black Slate Coaster

Slate is a natural stone and therefore features beautifully natural variations in color and texture. These heavy slate coasters make an impressive gift.

Product Size : 10 x 10 cm.

Printing options : Laser Engraving, Screen Printing



COA-02

Cork Tea Coaster

Heat insulation, used to protect your table surface. Perfect for daily use and as tableware decoration specification. Durable and practical. 100% made from Cork material

Product Size : 10 cm (dia) / 5 mm (thickness)

Printing options : Screen Printing

Tea Coasters



COA-03

Bamboo Coaster with Case

Set of 4 coasters made of bamboo.

Presented in a bamboo holder.

Product Size : 11 x 11 x 3.5 cm

Printing options : Laser Engraving,
Screen Printing



BAMBOO



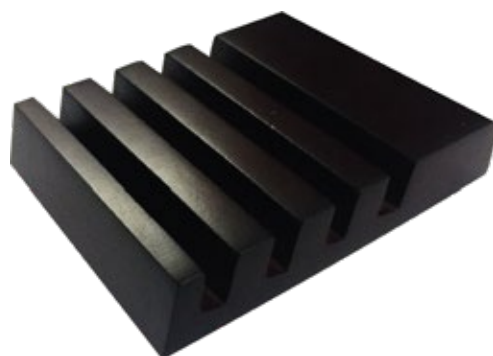


224

Hardboard Tea Coaster

Square shaped with rounded corners. Made from Hardboard material. Product Size : 10 x 10 cm | 1 Pack : 120 pcs.

Printing options : Sublimation



224-S

Wooden Coaster Base

Stores a set of 4pcs. Tea coasters.

Product Size : 7.8 x 6.5 cm | 1 Pack : 280 pcs.

Printing options : Laser Engraving



219-F

Square Glass Tea Coaster

Product Size : 10 x 10 cm | 1 Pack : 120 pcs.

Printing options : Sublimation



220-F

Round Glass Tea Coaster

Product Size : 10 x 10 cm | 1 Pack : 120 pcs.

Printing options : Sublimation



LUN-01

Promotional Lunch Box

Lunch box with two compartment. Fork & knife included. Made from PP material, BPA Free.

Volume : 1500 ml/52 oz. | Product Size : 23 x 16 x 7 cm

Printing options : Screen Printing, UV Printing



LUN-GLB**Glass Lunch Box with Bamboo Lid**

Lunchbox in glass with bamboo lid and silicone band.
Capacity 900 ml. Product Size : 20 x 15 x 6 cm

Printing options : Screen Printing, UV Printing
Laser Engraving

**LUN-WS****Wheat Straw Lunch Box**

Lunch box made from a combination of wheat straw & PP material. BPA free material, and suitable for dishwasher, microwave oven and freezer. Includes an band with a fork and a knife. Product Dimension : 16.5 x 12 x 5.5 cm

Printing options : Screen Printing, UV Printing

**LUN-WSB****Wheat Straw Double Lunch Box with Bamboo Top**

Eco-friendly lunchbox made of 50% PP and 50% wheat straw. With a matching bamboo lid and elastic closure strap. A beautiful combination of natural, biodegradable materials.
Product Size : 18.5 x 10.5 x 10.5 cm.

Printing options : Screen Printing, UV Printing

